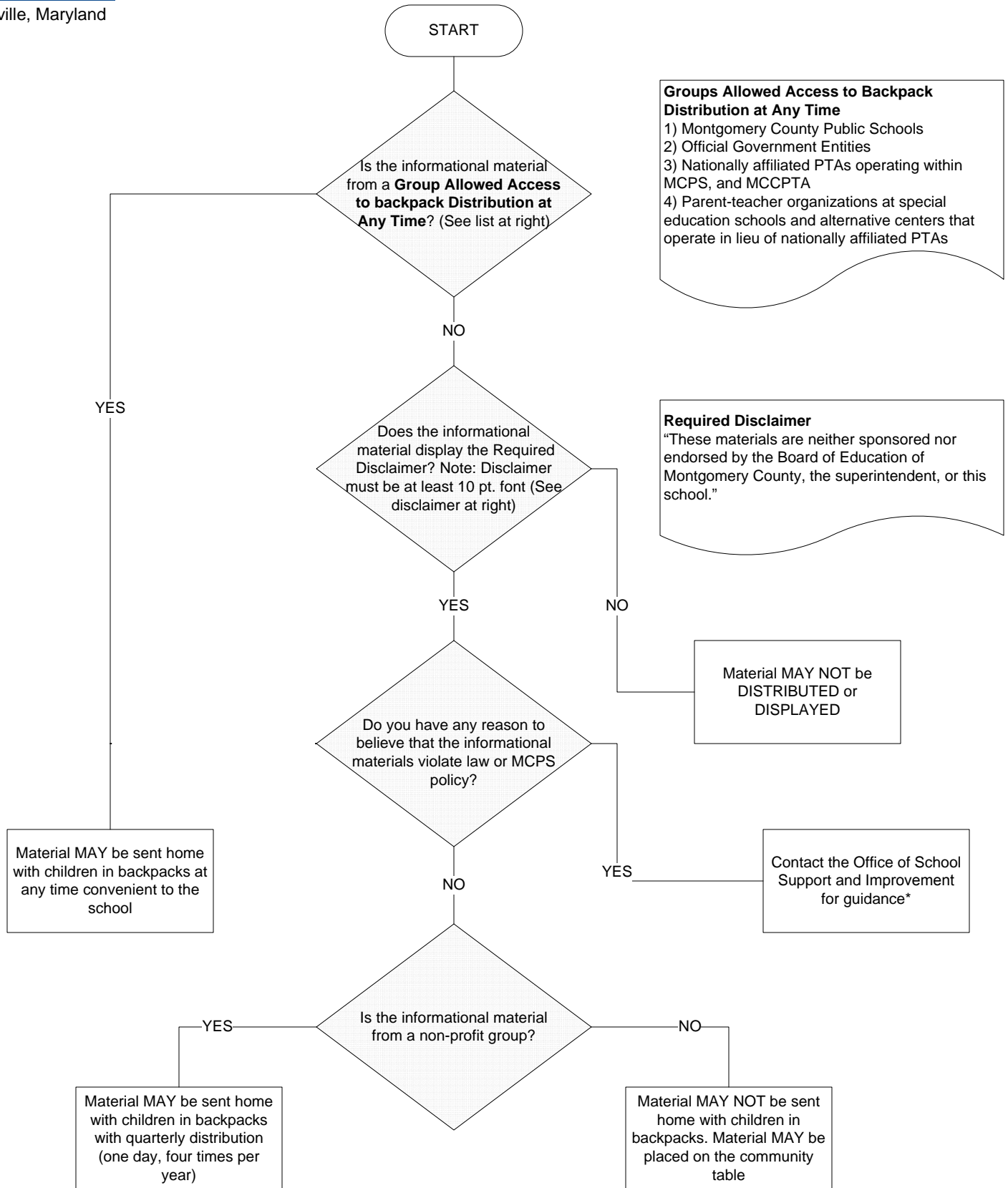




Rockville, Maryland

Policy CNA-RA Decision Tree For Elementary Schools

Display and Distribution of Informational Materials and Announcements



Groups Allowed Access to Backpack Distribution at Any Time

- 1) Montgomery County Public Schools
- 2) Official Government Entities
- 3) Nationally affiliated PTAs operating within MCPS, and MCCPTA
- 4) Parent-teacher organizations at special education schools and alternative centers that operate in lieu of nationally affiliated PTAs

Required Disclaimer
 "These materials are neither sponsored nor endorsed by the Board of Education of Montgomery County, the superintendent, or this school."

Material MAY NOT be DISTRIBUTED or DISPLAYED

Contact the Office of School Support and Improvement for guidance*

*For all questions or concerns, please contact the Office of School Support and Improvement at 240-740-3100